

OUR PRODUCT RANGE

Al Aman offers a wide range of Fire Fighting Equipment that are approved by the UAE Civil Defence.

Our range of products include:

I) FIRE FIGHTING PUMPS

- UL Listed Fire Pumps
- Non-UL Listed Pumps

II) FIRE PUMP ACCESSORIES

- Fire Pump Control Panels
- Flow Meter
- Pressure Relief Valve
- Fuel Tank



FIRE PUMPS

Al Aman Fire pumps are designed and manufactured by highly qualified engineers and skilled workforce using the most modern equipment to ensure top quality and optimum performance under all types of site conditions. All our pumps undergo rigorous testing and compliance to safety and performance standards.

UL LISTED FIRE PUMPS

Our UL listed fire pumps offer the range of 50 gpm to 2000 gpm. These pumps are manufactured as per NFPA 20 and UL Approval Standards.

We offer the UL listed Fire Pumps in different types depending on the pump capacities.

HORIZONTAL FIRE PUMPS - AL AMAN BRAND

EH Series

Horizontal End Section Fire Pumps

Pump Capacity **50 - 750 gpm**

HSC Series

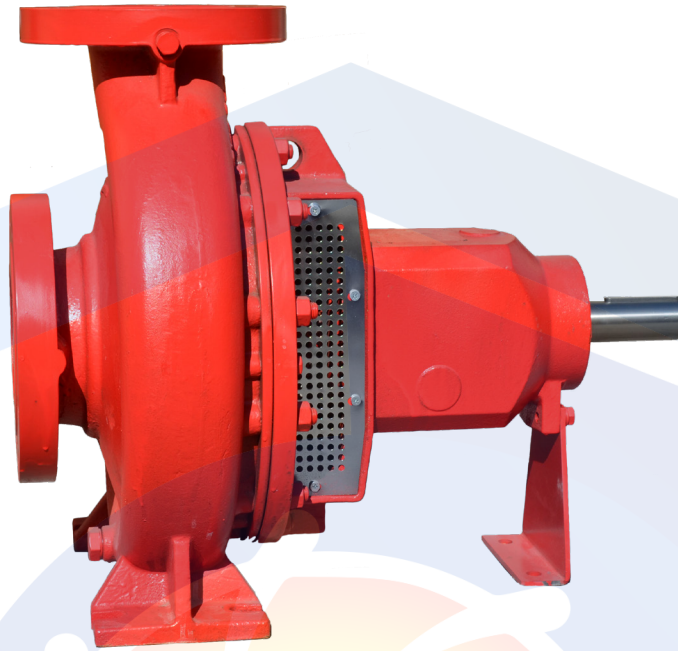
Horizontal Split-case Fire Pumps

Pump Capacity **1000 - 2000 gpm**

VERTICAL TURBINE FIRE PUMP - PDFC BRAND

Centrifugal Vertical Turbine Fire Pumps

Pump Capacity **50 - 5000 gpm**



EH SERIES 50 – 750 GPM PUMP CAPACITY

Horizontal End-Section Fire Pumps.

EH Pumps are designed in accordance with all the requirements of UL Standard for safety (UL448). EH pumps are optimized hydraulic pumps design, delivering high efficiency and energy conservation.



EH SERIES UL CERTIFICATION

QWZU.EX26648 - CENTRIFUGAL FIRE PUMPS, END SUCTION

Centrifugal Fire Pumps, End Suction

See General Information for Centrifugal Fire Pumps, End Suction

AL AMAN FIRE FIGHTING EQUIPMENT MFG
AL Quasis Industrial Area 4
P.O BOX 117750
DUBAI, UAE, UNITED ARAB EMIRATES

EX26648

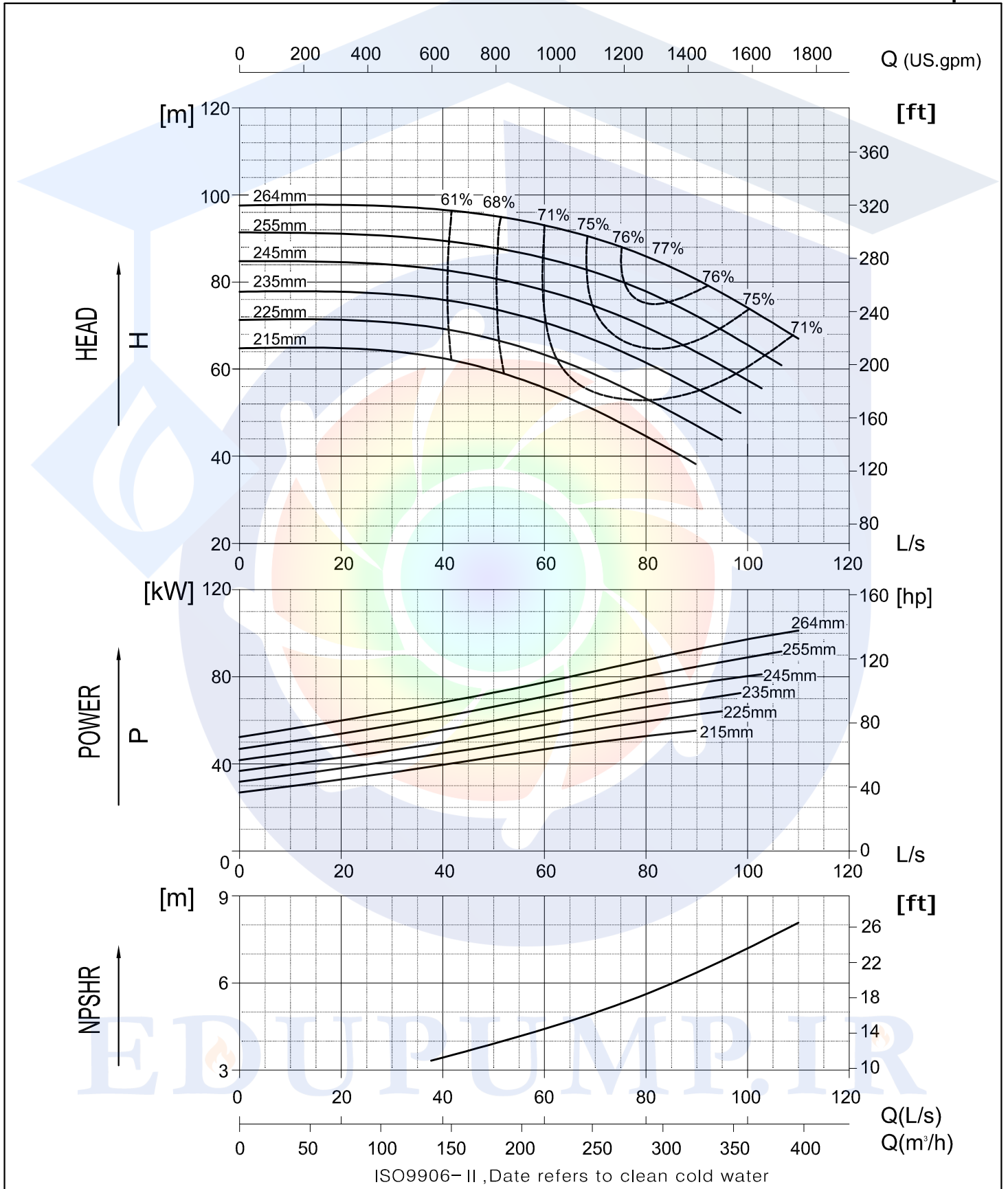
Rated Capacity GPM	Size In.	Model Dsg	Rated Net Pressure Range psi	Approx Speed RPM	Max Working Pressure psi
50	2-1/2 x 1-1/2	EH2515250	100-148	2900	200
100	2-1/2 x 1-1/2	EH2515250	97-148	2900	200
150	2-1/2 x 1-1/2	EH2515250	93-146	2900	200
500	5x3	EH53315	129-236	2900	280
750	5x4	EH54315	133-220	2900	280

Trademark and/or Tradename: ALAMAN

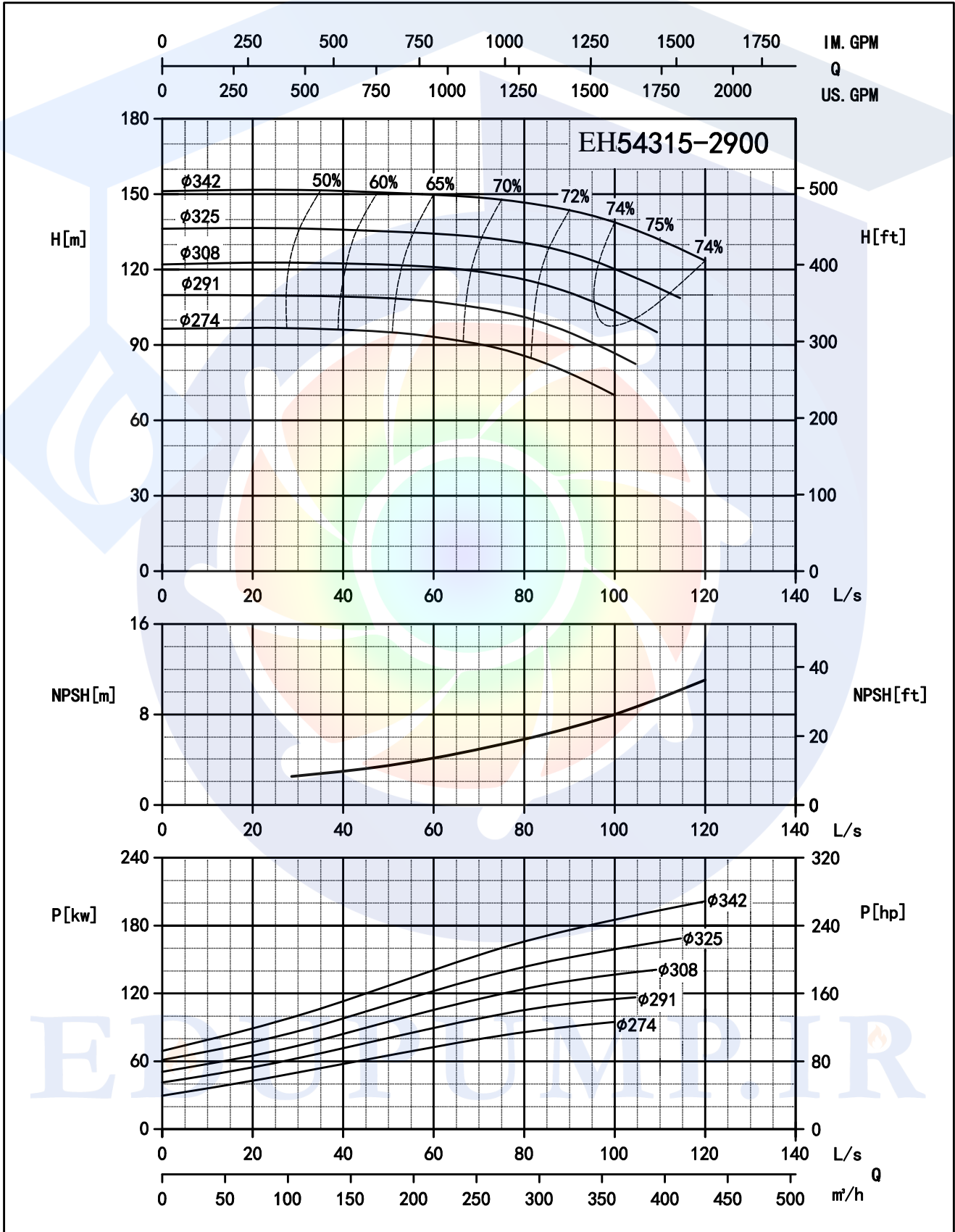
EDUPUMP.IR

Performance Curve

2900 rpm



ISO2858 END SUCTION PUMP PERFORMANCE CURVE EH SERIES 50HZ



FIRE PUMP ACCESSORIES

FIRE PUMP CONTROL PANELS

All our control panels are factory assembled, wired, tested as a unit and comply to all requirements of the latest edition of NFPA-20 (Centrifugal Fire Pumps) and NFPA-70 (National Electrical Code). Controllers are listed by Underwriters Laboratories' (UL), Inc. and are in compliance with UL 218,

Standard for Pump Controllers (CSA), and Standard for Industrial Control Equipment (CUL) and approved by Factory Mutual (FM).

Our three types of control panel:

- Electric Control Panel
- Diesel Control Panel
- Jockey Control Panel



Brand Name:
TORNATECH



FLOW METER

We offer a reliable flow meter that is accurate in calibration with gpm meter and installed at the discharge of a fire pump to accurately determine pump performance.

Brand Name:
GEERAND – MADE IN USA

Model:
K

Range:
50 – 3000 gpm

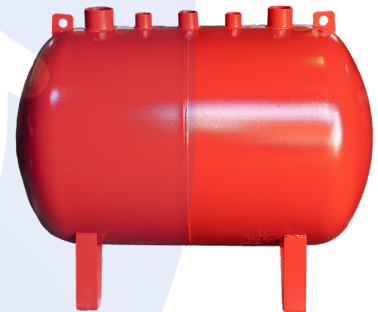


PRESSURE RELIEF VALVE

An important safety component of a fire protection system is the pressure relief valve which releases excess pressure. We offer a UL Listed product from the reputed and reliable brand 'WEFLO'.

Brand Name:
WEFLO – UL Listed

Working Pressure:
300 PSI



FUEL TANK

Our fuel tank is a cylindrical construction with storage capacity of up to 550 gallons.



EDUPUMP
WWW.EDUPUMP.IR

اولین و بزرگترین

سایت تخصصی سیستم‌های پمپاژ
با امکان محاسبه آنلاین و انتخاب پمپ

تولید بوستر پمپ آتش نشانی

در کلاس‌های S3 - S2 - S1
مورد تایید سازمان آتش نشانی تهران



اولین و بزرگترین مرجع انتخاب آنلاین سیستم‌های پمپاژ

انتخاب آنلاین انواع بوستر پمپ

انتخاب آنلاین انواع پمپ

ارائه مطالب تخصصی

اولین سایت مرجع انتخاب آنلاین پمپ

در حوزه‌های:

ایمنی و آتش نشانی
آب و فاضلاب
صنایع غذایی
استخر
صنعت
معدن



تولید بوستر پمپ آبرسانی دور متغیر بدون محدودیت برند



آموزش

تهویه و تخلیه دود
سیستم‌های پمپاژ
ایمنی معماری
اطفاء حریق
اعلام حریق

مشاوره - طراحی - اجراء

تاسیسات مکانیکی (موتورخانه - استخر)
تهویه و تخلیه دود
سیستم‌های پمپاژ
ایمنی معماری
اعلام حریق
اطفاء حریق

تهران، سعدی شمالی، خیابان مرادی نور، پلاک ۳۱

تلفن: ۰۲۱-۷۷۶۸۶۹۶۶ فکس: ۰۲۱-۷۷۶۷۸۶۵۹

EDUPUMP.IR

WWW.EDUPUMP.IR