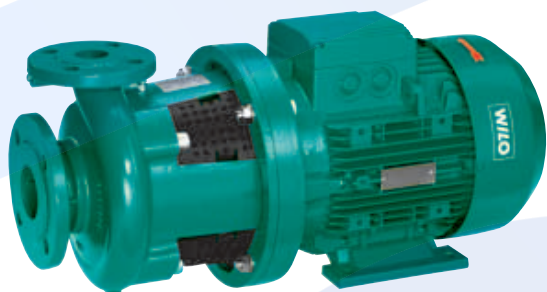


### Series description Wilo-CronoBloc-BL



#### Materials

- Pump housing and lantern: Standard: EN-GJL-250; optional: Spheroidal cast iron EN-GJS-400-18-LT
- Impeller: Standard: EN-GJL-200; Special version: Red brass G-CuSn10
- Shaft: 1.4122
- Mechanical seal: AQEGG; other mechanical seals on request

#### Description/design

- Single-stage low-pressure centrifugal pump in block design, with axial suction port and radially arranged pressure port with
- Mechanical seal
  - Flange connection with pressure measuring connection R  $\frac{1}{8}$
  - Lantern
  - Coupling
  - IEC standard motor

#### Design

Glanded pump in block design with flange connection

#### Application

For pumping cold and hot water (in accordance with VDI 2035) without abrasive substances in heating, cold water and cooling water systems

#### Scope of delivery

- Pump
- Installation and operating instructions

#### Type key

Example	<b>BL 40/160-4/2</b>
<b>BL</b>	Monobloc pump
<b>40</b>	Nominal diameter DN of the pipe connection (pressure port)
<b>160</b>	Nominal impeller diameter
<b>4</b>	Nominal motor power $P_2$ in kW
<b>2</b>	Pole pair number

#### Technical data

- Permissible temperature range  $-20^{\circ}\text{C}$  to  $+140^{\circ}\text{C}$
- Mains connection 3~400 V, 50 Hz
- Protection class IP 55
- Nominal diameter DN 32 to DN 125
- Max. operating pressure 16 bar (optionally 25 bar on request)

#### Special features/product benefits

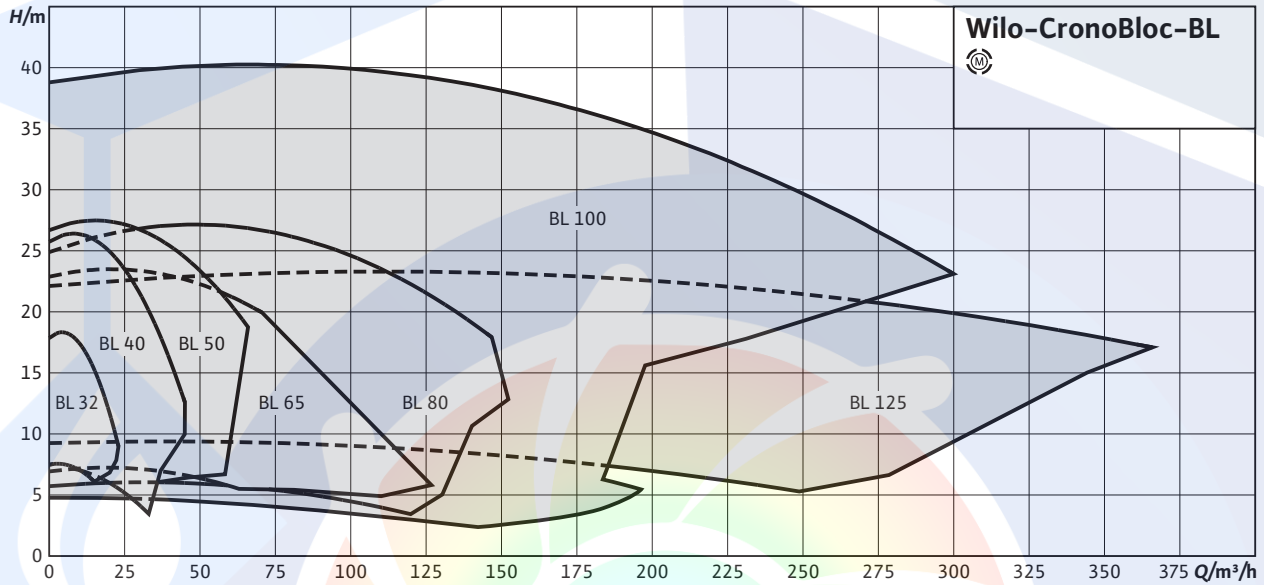
- High-efficiency motors as standard; from 0.75 kW nominal motor power: motors with IE2 technology
- Reduced life cycle costs due to optimised efficiency
- High corrosion protection due to cathoretic coating of the cast iron components
- Standard condensate drainage holes in the motor housings
- Application benefits in air-conditioning and cooling systems due to direct condensate drainage by means of optimised lantern design
- Bidirectional mechanical seal with forced flushing
- High worldwide obtainability of standard motors (according to Wilo specifications) and mechanical seals
- Meets user requirements due to performance and main dimensions in accordance with EN 733 (DIN for norm pumps)

# Heating, air-conditioning, cooling

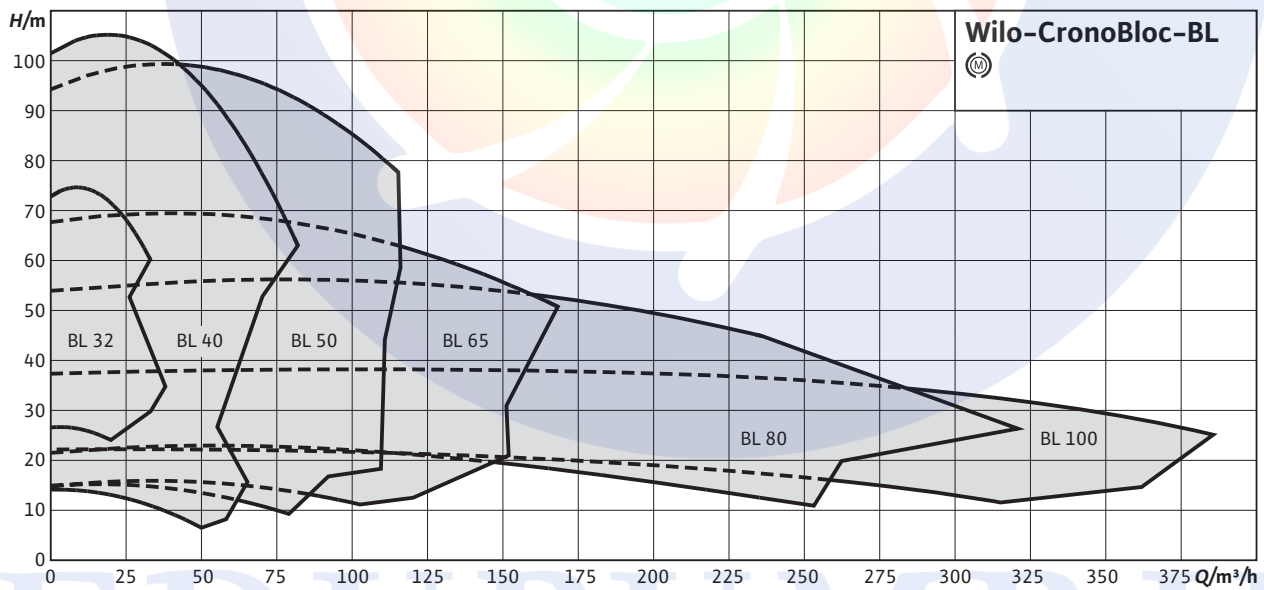
Glanded monobloc pumps (single pumps)

## Series description Wilo-CronoBloc-BL

### Wilo-CronoBloc (4-pole)



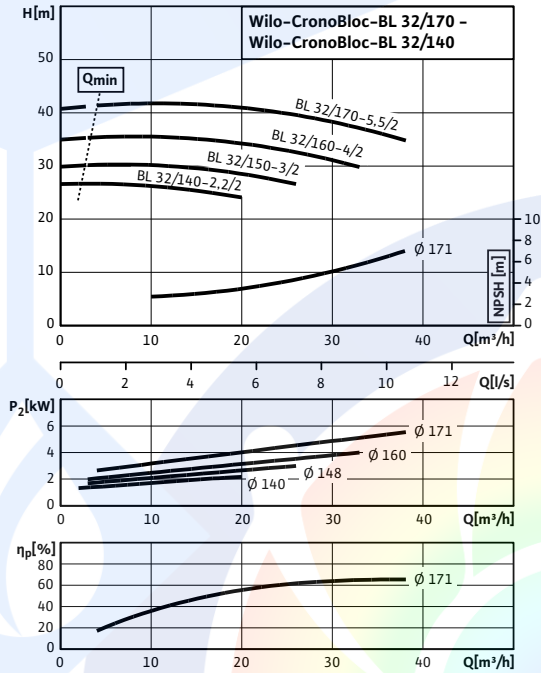
### Wilo-CronoBloc (2-pole)



### Pump curves Wilo-CronoBloc-BL

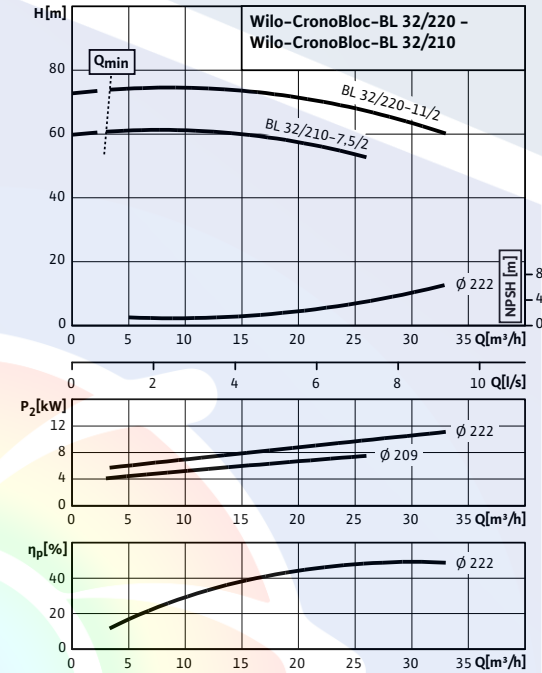
Wilo-CronoBloc-BL 32/140-2,2/2 - 32/170-5,5/2

2-pole, 50 Hz



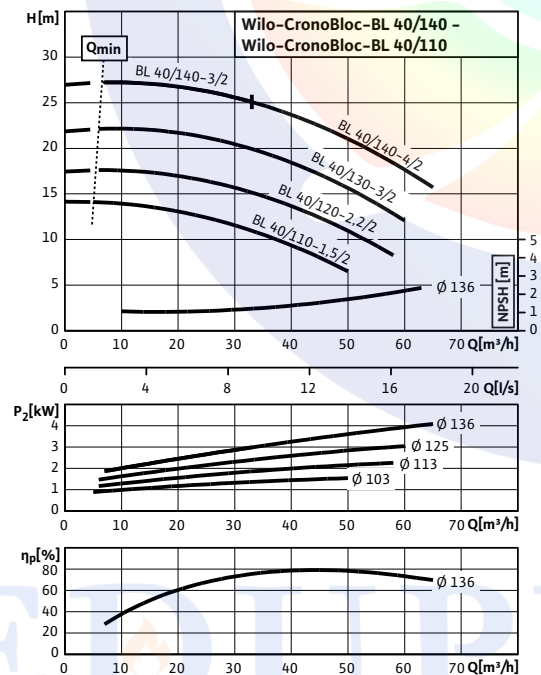
Wilo-CronoBloc-BL 32/210-7,5/2 - 32/220-11/2

2-pole, 50 Hz



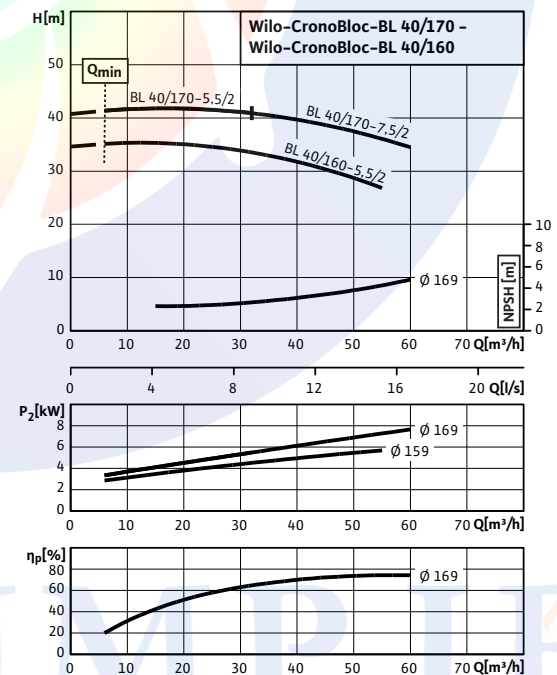
Wilo-CronoBloc-BL 40/110-1,5/2 - 40/140-4/2

2-pole, 50 Hz



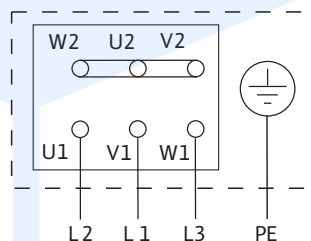
Wilo-CronoBloc-BL 40/160-5,5/2 - 40/170-7,5/2

2-pole, 50 Hz

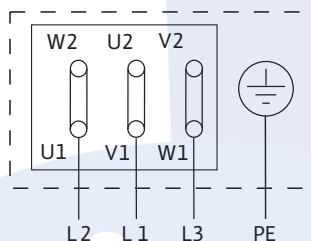


### Terminal diagram, motor data Wilo-CronoBloc-BL

Terminal diagram Star switching



Terminal diagram Delta switching



Motor protection switch required onsite. Check the direction of rotation! To change the direction of rotation, swap any two phases.

k

$P_2 \leq 3 \text{ kW}$	3~400 V Y
	3~230 V $\Delta$
$P_2 \geq 4 \text{ kW}$	3~690 V Y
	3~400 V $\Delta$

After removing the bridges, a Y- $\Delta$  start is possible.

### Terminal diagram, motor data Wilo-CronoBloc-BL

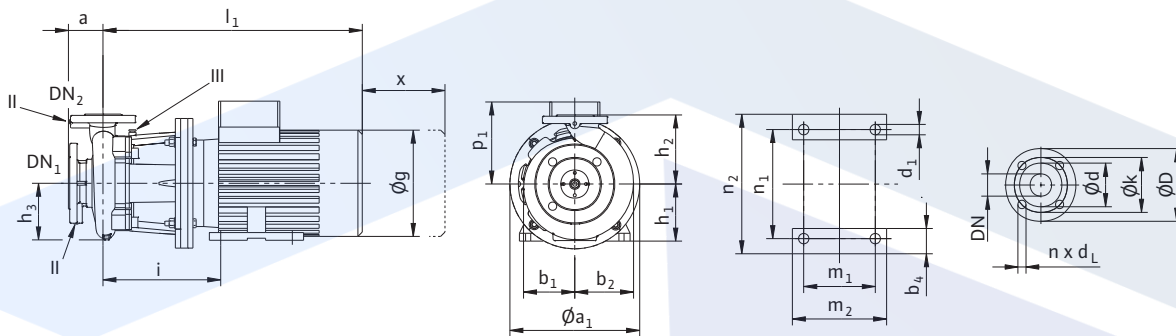
Motor data (2-pole)

Wilo-CronoBloc-BL...	Nominal current (approx.)	Power factor	Efficiency
	$I_N$ 3~400 V	$\cos \varphi$	$\eta_M$
	A		-
1.5 kW	3.30	0.77	0.81
2.2 kW	4.40	0.87	0.83
3 kW	5.80	0.88	0.85
4 kW	7.70	0.87	0.86
5.5 kW	10.20	0.87	0.87
7.5 kW	13.70	0.89	0.88
11 kW	22.00	0.81	0.89
15 kW	28.50	0.84	0.90
18.5 kW	34.20	0.86	0.91
22 kW	40.70	0.85	0.91
30 kW	53.00	0.85	0.92
37 kW	65.00	0.88	0.93

Observe motor name plate data

# Heating, air-conditioning, cooling

## Glanded monobloc pumps (single pumps)



### Dimensions, weights Wilo-CronoBloc-BL

#### Dimensions, weights (4-pole)

Wilo-CronoBloc-BL...	Nominal diameter		Dimensions														Weight approx.
	$DN_1$	$DN_2$	$a$	$b_1$	$b_2$	$b_3$	$\phi g$	$h_1$	$h_2$	$h_3$	$l$	$l_1$	$n_3$	$P_1$	$q$	$x$	$m$
	-		mm														kg
80/150-1.5/4	100	80	125	160	196	144	193	180	225	178	137	499	130	-	144	135	73
80/160-2.2/4	100	80	125	160	196	150	217	180	225	178	137	555	130	-	150	135	81
80/170-3/4	100	80	125	160	196	155	220	180	225	178	137	590	130	-	155	135	91
80/200-3/4	100	80	125	170	197	-	220	200	250	178	143	590	180	168	-	120	95
80/200-4/4	100	80	125	170	197	-	246	200	250	178	143	633	180	188	-	120	98
100/145-1.5/4	125	100	125	167	206	144	193	200	280	189	147	510	130	-	144	60	81
100/150-2.2/4	125	100	125	167	206	150	217	200	280	189	147	565	130	-	150	60	91
100/160-3/4	125	100	125	167	206	155	220	200	280	189	147	600	130	-	155	70	99
100/170-4/4	125	100	125	167	206	170	246	200	280	189	147	643	130	-	170	70	102
100/180-4/4	125	100	125	176	211	-	246	200	280	196	156	646	180	188	-	120	102

#### Dimensions, weights (2-pole)

Wilo-CronoBloc-BL...	Nominal diameter		Dimensions														Weight approx.
	$DN_1$	$DN_2$	$a$	$b_1$	$b_2$	$b_3$	$\phi g$	$h_1$	$h_2$	$h_3$	$l$	$l_1$	$n_3$	$P_1$	$q$	$x$	$m$
	-		mm														kg
32/140-2.2/2	50	32	80	113	129	144	193	160	160	122	110	476	130	-	144	95	54
32/150-3/2	50	32	80	113	129	150	217	160	160	122	110	531	130	-	150	95	61
32/160-4/2	50	32	80	113	129	156	232	160	160	122	110	555	130	-	156	95	72
40/110-1.5/2	65	40	80	101	119	144	193	160	140	111	114	447	130	-	144	100	47
40/120-2.2/2	65	40	80	101	119	144	193	160	140	111	114	474	130	-	144	100	50
40/130-3/2	65	40	80	101	119	150	217	160	140	111	114	530	130	-	150	100	55
40/140-3/2	65	40	80	101	119	150	217	160	140	111	114	530	130	-	150	100	57
40/140-4/2	65	40	80	101	119	156	232	160	140	111	114	554	130	-	156	100	69
50/110-3/2	65	50	100	111	133	150	217	160	160	124	121	537	130	-	150	110	60
50/120-3/2	65	50	100	111	133	150	217	160	160	124	121	537	130	-	150	110	60
50/120-4/2	65	50	100	111	133	156	232	160	160	124	121	561	130	-	156	110	72
65/120-4/2	80	65	100	123	151	156	232	160	180	155	127	566	130	-	156	120	77

# Heating, air-conditioning, cooling

## Glanded monobloc pumps (single pumps)

### Dimensions, weights Wilo-CronoBloc-BL

#### Dimensions, weights (2-pole)

Wilo-CronoBloc-BL...	Nominal diameter		Dimensions																		Weight approx.
	DN <sub>1</sub>	DN <sub>2</sub>	a	∅ a1	b <sub>1</sub>	b <sub>2</sub>	b <sub>4</sub>	d <sub>1</sub>	∅ g	h <sub>1</sub>	h <sub>2</sub>	h <sub>3</sub>	l	l <sub>1</sub>	m <sub>1</sub>	m <sub>2</sub>	n <sub>1</sub>	n <sub>2</sub>	P <sub>1</sub>	x	m
	-		mm																		kg
32/170-5.5/2	50	32	80	325	113	129	53	12	267	132	160	122	284	600	140	180	216	256	188	95	87
32/210-7.5/2	50	32	80	300	145	149	53	12	267	132	180	145	292	614	140	180	216	256	188	100	99
32/220-11/2	50	32	80	350	145	149	60	15	320	160	180	145	352	761	210	256	254	300	250	100	154
40/160-5.5/2	65	40	80	325	120	135	53	12	267	132	160	132	285	601	140	180	216	256	188	100	89
40/170-5.5/2	65	40	80	325	120	135	53	12	267	132	160	132	285	601	140	180	216	256	188	100	89
40/170-7.5/2	65	40	80	325	120	135	53	12	267	132	160	132	285	607	140	180	216	256	188	100	93
40/180-7.5/2	65	40	100	300	145	151	53	12	267	132	180	145	299	621	140	180	216	256	188	100	103
40/210-11/2	65	40	100	350	145	151	60	15	320	160	180	145	359	768	210	256	254	300	250	100	157
40/220-11/2	65	40	100	350	145	151	60	15	320	160	180	145	359	768	210	256	254	300	250	100	157
40/220-15/2	65	40	100	350	145	151	60	14	320	160	180	145	359	768	210	260	254	320	250	100	165
40/250-22/2	65	40	100	350	174	178	70	14	363	180	225	160	373	854	241	300	279	352	291	110	208
40/270-22/2	50	40	100	350	174	178	70	14	363	180	225	160	373	854	241	300	279	352	291	110	208
40/270-30/2	65	40	100	400	174	178	83	18	402	200	225	160	402	928	305	380	318	403	305	110	264
50/130-5.5/2	65	50	100	300	111	133	53	12	267	132	160	124	296	612	140	180	216	256	188	110	84
50/140-5.5/2	65	50	100	300	111	133	53	12	267	132	160	124	296	612	140	180	216	256	188	110	84
50/140-7.5/2	65	50	100	300	111	133	53	12	267	132	160	124	296	618	140	180	216	256	188	110	88
50/150-5.5/2	65	50	100	325	127	147	53	12	267	132	180	152	293	609	140	180	216	256	188	120	92
50/150-7.5/2	65	50	100	325	127	147	53	12	267	132	180	152	293	615	140	180	216	256	188	120	96
50/170-11/2	65	50	100	350	127	147	60	15	320	160	180	152	362	771	210	256	254	300	250	120	142
50/200-11/2	65	50	100	350	153	172	60	15	320	160	200	159	359	768	210	256	254	300	250	110	159
50/200-15/2	65	50	100	350	153	172	60	14	320	160	200	159	359	768	210	260	254	320	250	110	166
50/210-15/2	65	50	100	350	153	172	60	14	320	160	200	159	359	768	210	260	254	320	250	110	166
50/210-18.5/2	65	50	100	350	153	172	60	14	320	160	200	159	359	769	210	304	254	320	250	110	170
50/220-18.5/2	65	50	100	350	153	172	60	14	320	160	200	159	359	769	210	304	254	320	250	110	170
50/220-22/2	65	50	100	350	153	172	70	14	363	180	200	159	372	853	241	300	279	352	291	110	200
50/240-30/2	65	50	100	400	174	186	83	18	402	200	225	179	410	936	305	380	318	403	305	110	265
50/260-30/2	65	50	100	400	174	186	83	18	402	200	225	179	410	936	305	380	318	403	305	110	265
50/260-37/2	65	50	100	400	174	186	83	18	402	200	225	179	410	936	305	380	318	403	305	110	294
65/130-5.5/2	80	65	100	300	123	151	53	12	267	132	180	155	301	617	140	180	216	256	188	120	89
65/140-7.5/2	80	65	100	300	123	151	53	12	267	132	180	155	301	623	140	180	216	256	188	120	93
65/160-11/2	80	65	100	350	136	162	60	15	320	160	200	155	370	779	210	256	254	300	250	120	148
65/170-11/2	80	65	100	350	136	162	60	15	320	160	200	155	370	779	210	256	254	300	250	120	148
65/170-15/2	80	65	100	350	136	162	60	14	320	160	200	155	370	779	210	260	254	320	250	120	155
65/190-15/2	80	65	100	350	156	181	60	14	320	160	225	170	374	783	210	260	254	320	250	120	172
65/190-18.5/2	80	65	100	350	156	181	60	14	320	160	225	170	374	784	210	304	254	320	250	120	176
65/210-18.5/2	80	65	100	350	156	181	60	14	320	160	225	170	374	784	210	304	254	320	250	120	176
65/210-22/2	80	65	100	350	156	181	70	14	363	180	225	170	387	868	241	300	279	352	291	120	209
65/220-30/2	80	65	100	400	156	181	83	18	402	200	225	170	399	925	305	380	318	403	305	120	255
80/145-11/2	100	80	125	350	160	196	60	15	320	160	225	178	377	786	210	256	254	300	250	135	158
80/150-15/2	100	80	125	350	160	196	60	14	320	160	225	178	377	786	210	260	254	320	250	135	165
80/160-15/2	100	80	125	350	160	196	60	14	320	160	225	178	377	786	210	260	254	320	250	135	165
80/160-18.5/2	100	80	125	350	160	196	60	14	320	160	225	178	377	787	210	304	254	320	250	135	169
80/165-22/2	100	80	125	350	160	196	70	14	363	180	225	178	390	871	241	300	279	352	291	135	199



**EDUPUMP**  
WWW.EDUPUMP.IR

## اولین و بزرگترین

سایت تخصصی سیستم‌های پمپاژ  
با امکان محاسبه آنلاین و انتخاب پمپ

## تولید بوستر پمپ آتش نشانی

در کلاس‌های S3 - S2 - S1  
مورد تایید سازمان آتش نشانی تهران



اولین و بزرگترین مرجع انتخاب آنلاین سیستم‌های پمپاژ

انتخاب آنلاین انواع بوستر پمپ

انتخاب آنلاین انواع پمپ

ارائه مطالب تخصصی

## اولین سایت مرجع

## انتخاب آنلاین پمپ

در حوزه‌های:

ایمنی و آتش نشانی  
آب و فاضلاب  
صنایع غذایی  
استخر  
صنعت  
معدن



## تولید بوستر پمپ

## آبرسانی دور متغیر

بدون محدودیت برند



## آموزش

تهویه و تخلیه دود  
سیستم‌های پمپاژ  
ایمنی معماری  
اطفاء حریق  
اعلام حریق

## مشاوره - طراحی - اجراء

تاسیسات مکانیکی (موتورخانه - استخر)  
تهویه و تخلیه دود  
سیستم‌های پمپاژ  
ایمنی معماری  
اعلام حریق  
اطفاء حریق

تهران، سعدی شمالی، خیابان مرادی نور، پلاک ۳۱

تلفن: ۰۲۱-۷۷۶۸۶۹۶۶ فکس: ۰۲۱-۷۷۶۷۸۶۵۹

EDUPUMP.IR

WWW.EDUPUMP.IR